

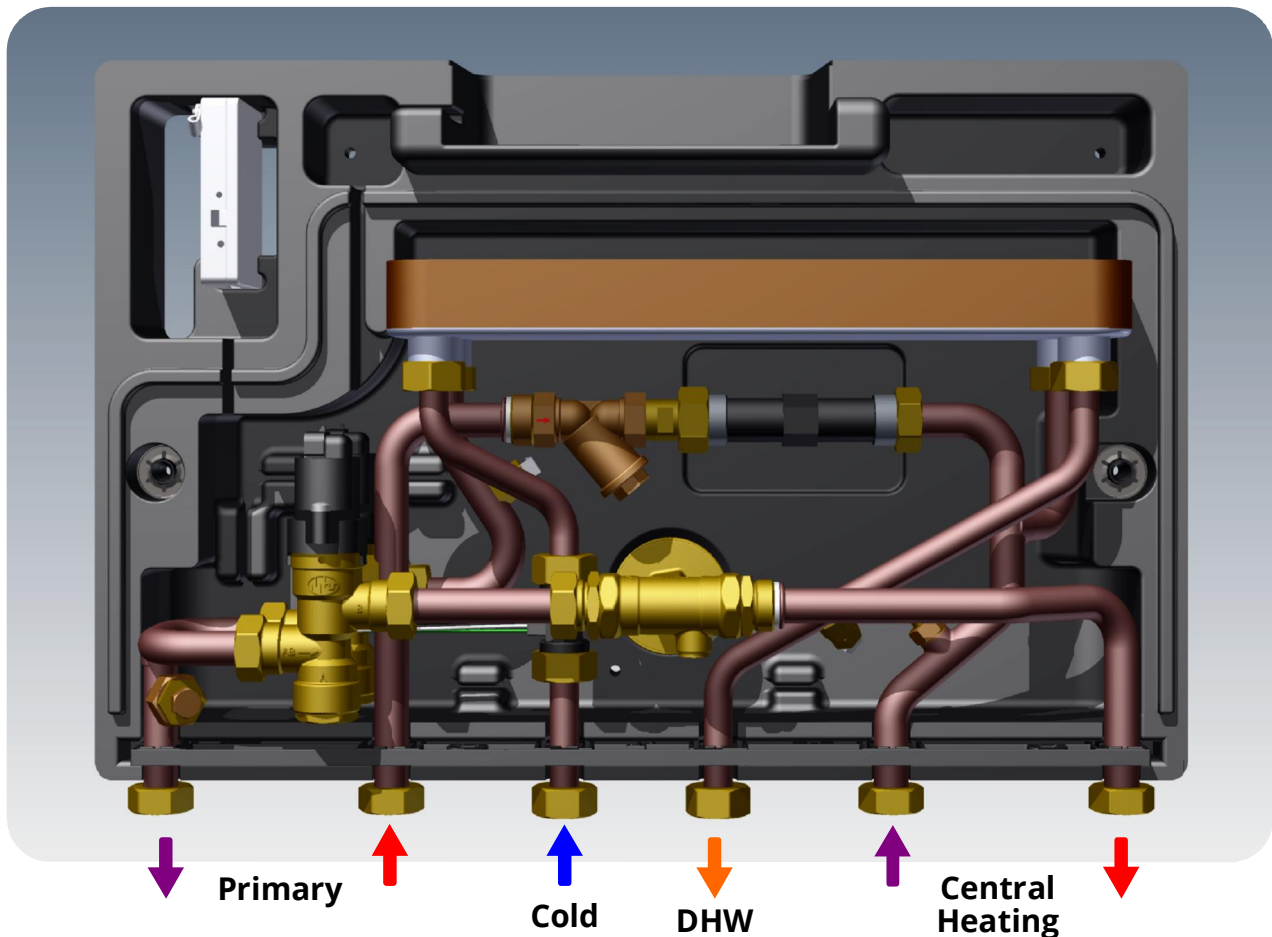
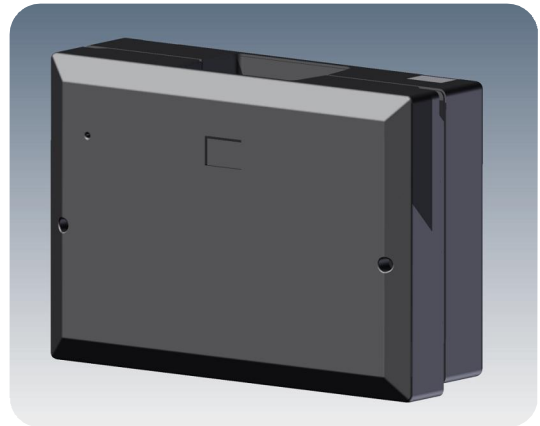
## DIGI

## Single Plate Electronic HIU, Direct CH

The DIGI HIU uses the latest electronic stepper motor controls to provide both DHW and central heating. Central heating is provided directly, with a Differential Pressure Valve fitted on the CH feed.

The twin wall DHW heat exchanger provides complete protection from cross contamination in the case of a plate failure, thereby meeting the most demanding European regulations.

The unit comes in an attractive EPP casing, with overall dimensions of only 570mm (W) x 390mm (H) x 170mm (D), and remarkably low heat losses of only 2W.



All connections are bottom entry, with a first fix kit as an optional extra. The fixing kit spaces the unit 50mm from the wall to allow pipes to be run up the back.

